



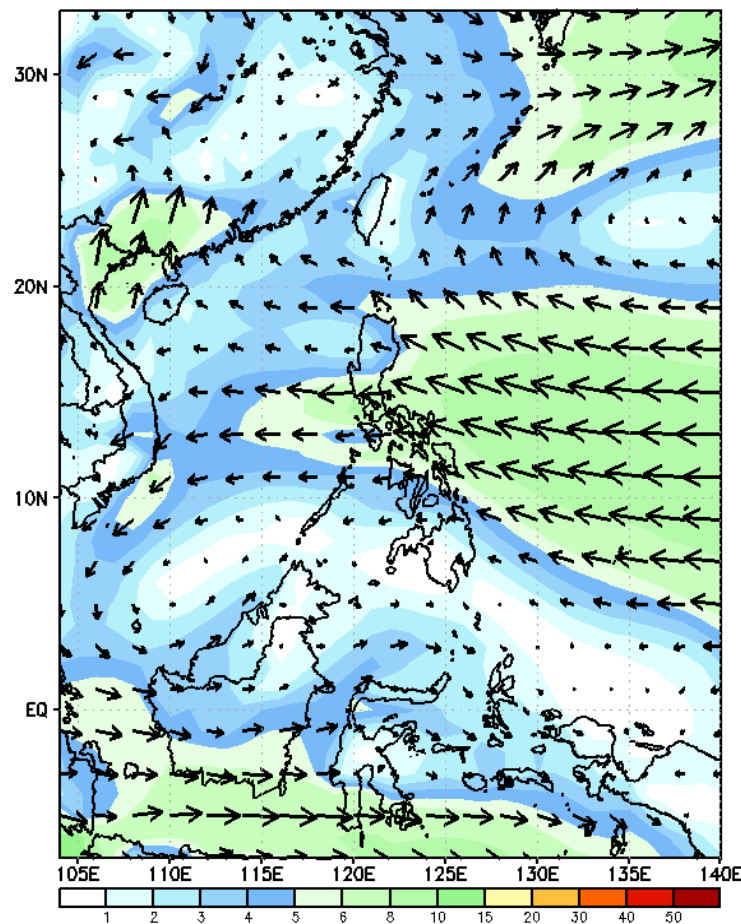
Week 1 & Week 2 Forecast for the Philippines using GEFS Model



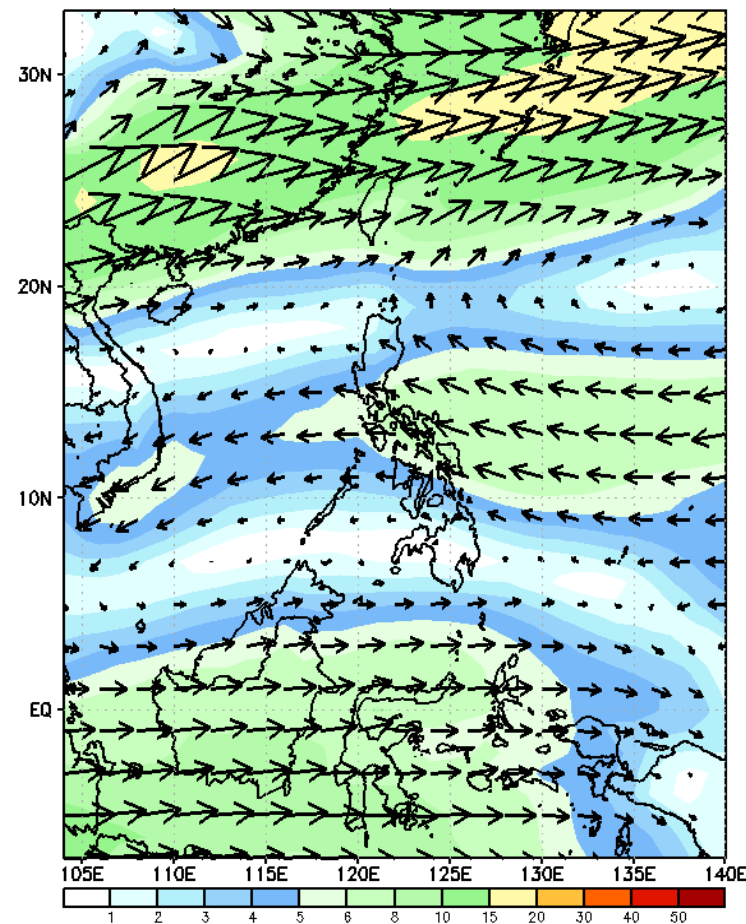
GEFS Week-1 Wind Forecasts:

Week 1: Mar 26- Apr 01, 2025

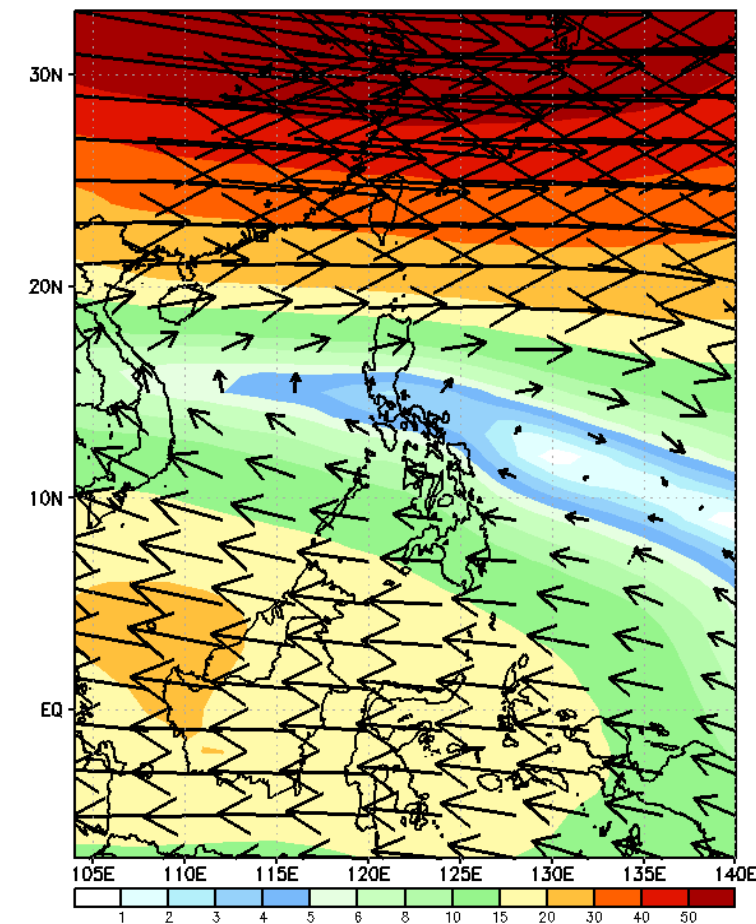
GEFS Week-1 850-hPa Wind Total
Valid: 20250326 - 20250401



GEFS Week-1 700-hPa Wind Total
Valid: 20250326 - 20250401

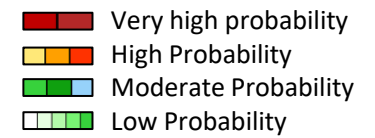


GEFS Week-1 200-hPa Wind Total
Valid: 20250326 - 20250401



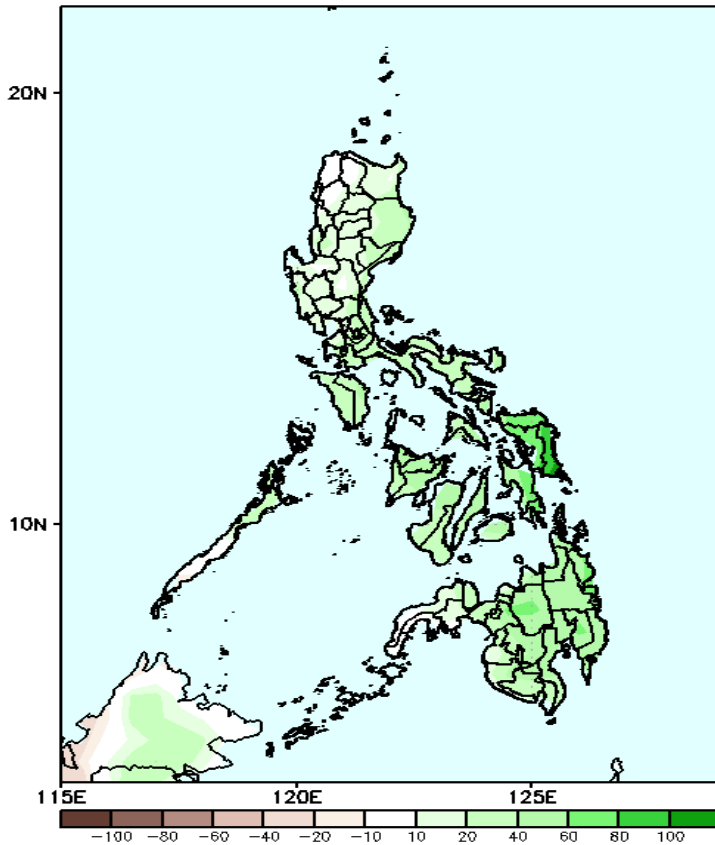
Northeast windflow affecting Extreme Northern Luzon, Easterlies affecting most parts of the country during the forecast period

Precipitation Anomaly and Exceedance Probability > 25/50 mm



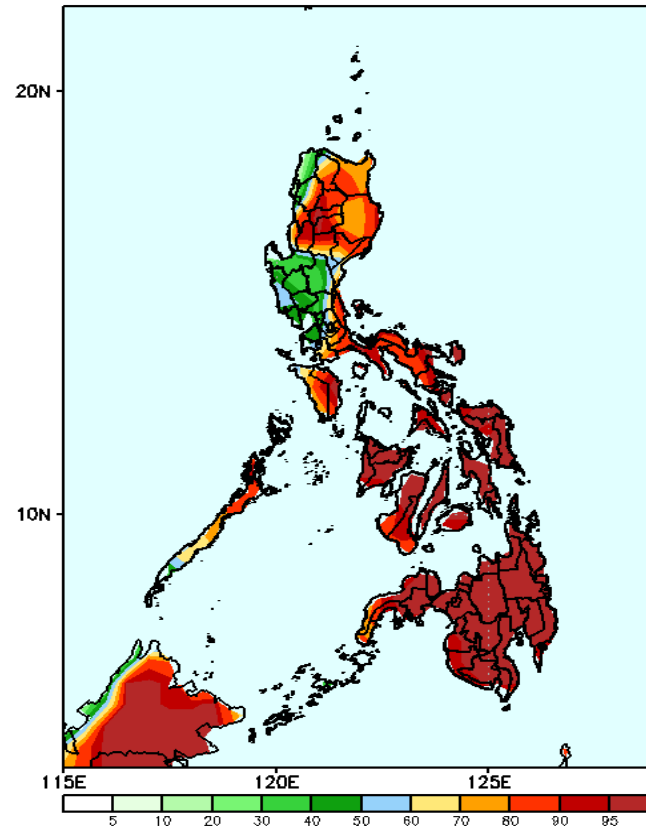
Week 1: Mar 26- Apr 01, 2025

GEFS Week-1 Precip Anomaly
Valid: 20250326 - 20250401



Increase of rainfall of 40-100mm is expected in Eastern Visayas; 20-80mm for the rest of the country.

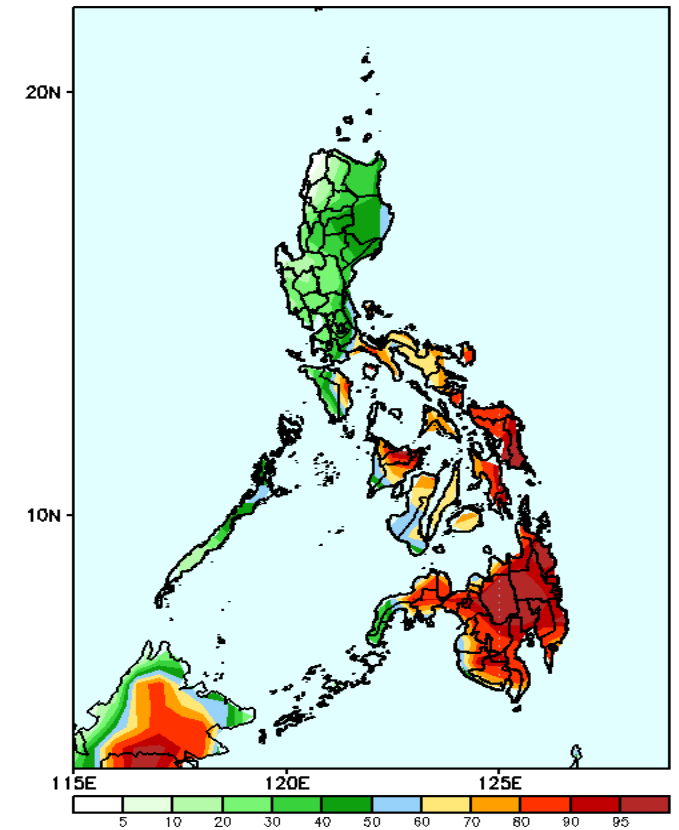
GEFS Week-1 Exceedance Prob. > 25mm
Valid: 20250326 - 20250401



Probability to Exceed 25mm

- High to very high over most parts of Northern & Southern Luzon, Bicol Region, Visayas and Mindanao;
- Moderate to high over the rest of Luzon.

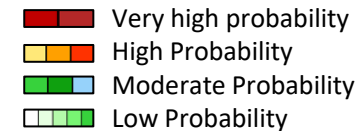
GEFS Week-1 Exceedance Prob. > 50mm
Valid: 20250326 - 20250401



Probability to Exceed 50mm

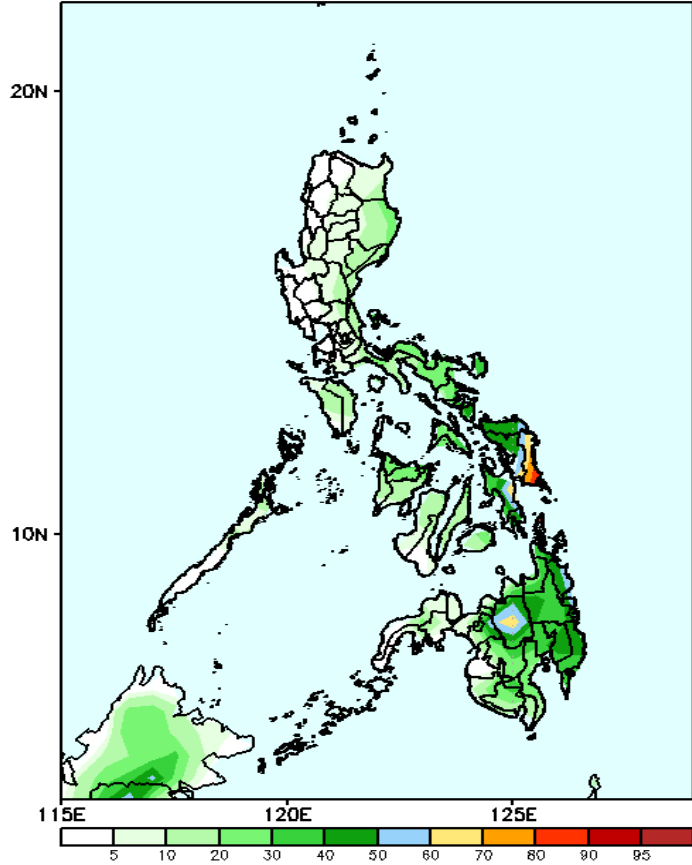
- High to very high over Eastern Visayas and most parts of Mindanao;
- Moderate to high over Oriental and Occidental Mindoro, Quezon, Bicol Region, the rest of Visayas and the western section of Zamboanga Peninsula;
- Low to moderate over Isabela and Palawan;
- Low over the rest of Luzon.

Exceedance Probability > 100/150/200 mm

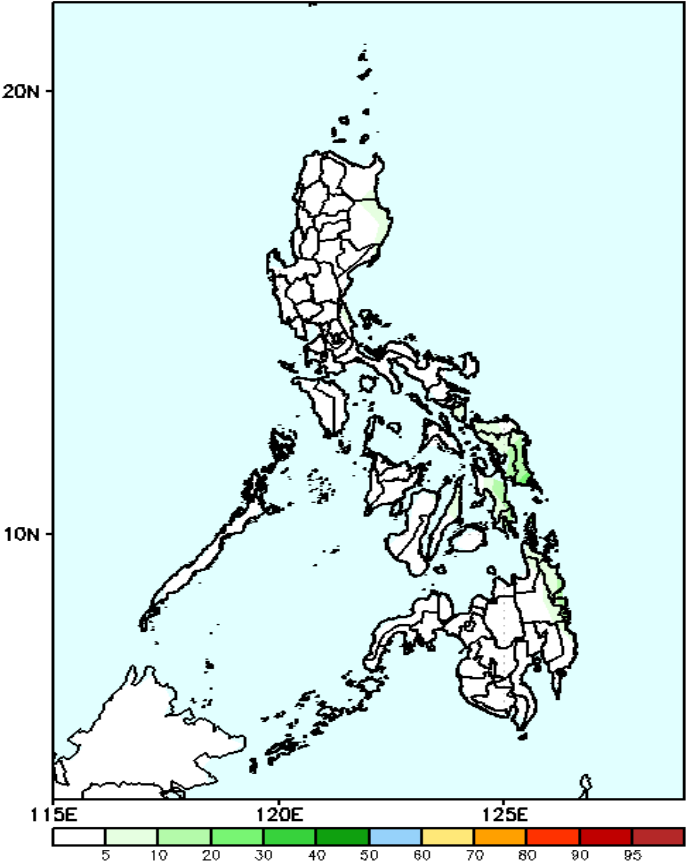


Week 1: Mar 26- Apr 01, 2025

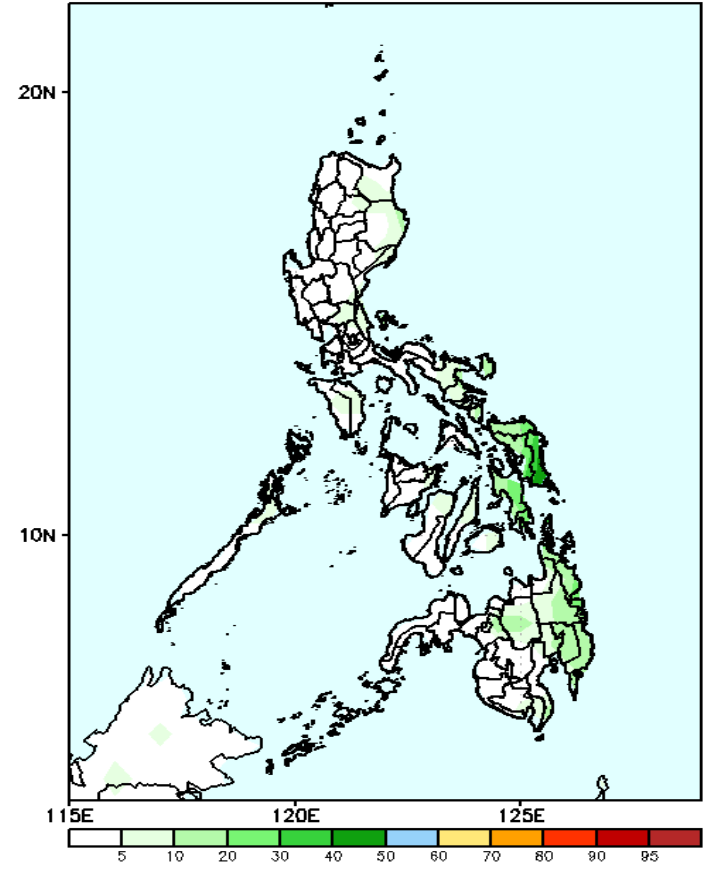
GEFS Week-1 Exceedance Prob. > 100mm
Valid: 20250326 - 20250401



GEFS Week-1 Exceedance Prob. > 200mm
Valid: 20250326 - 20250401



GEFS Week-1 Exceedance Prob. > 150mm
Valid: 20250326 - 20250401



- Probability to Exceed 100mm**
- Moderate to high over Eastern Visayas and Bukidnon;
 - Low to moderate over Bicol Region and the rest of Mindanao;
 - Low over the rest of the country.

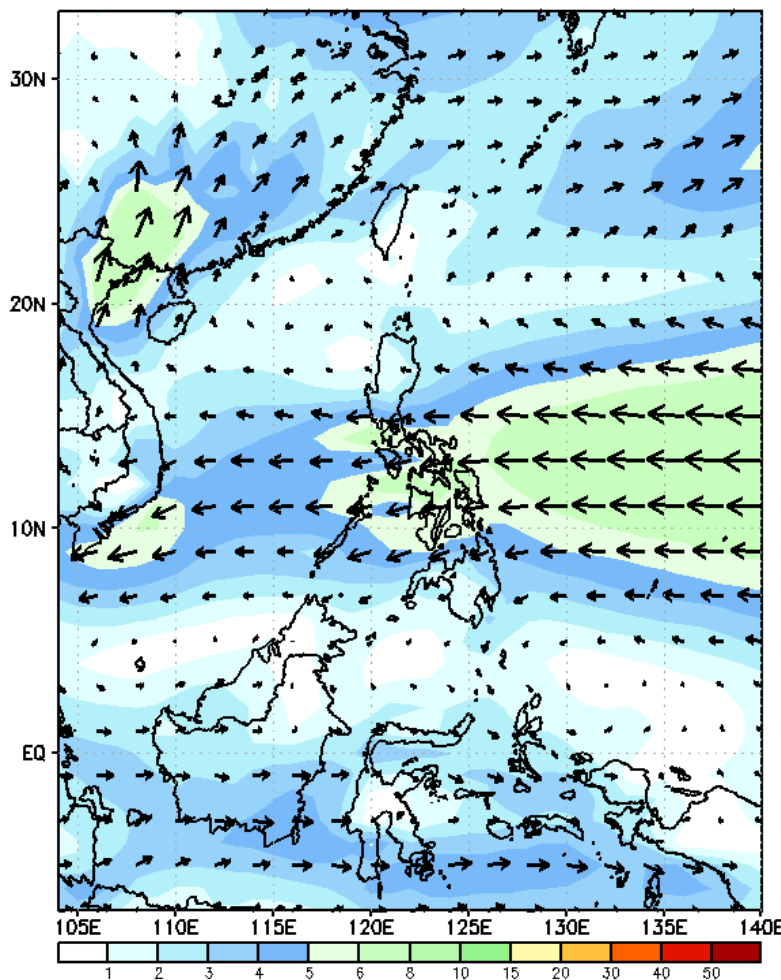
- Probability to Exceed 150mm**
- Low across the country.

- Probability to Exceed 200mm**
- Low across the country.

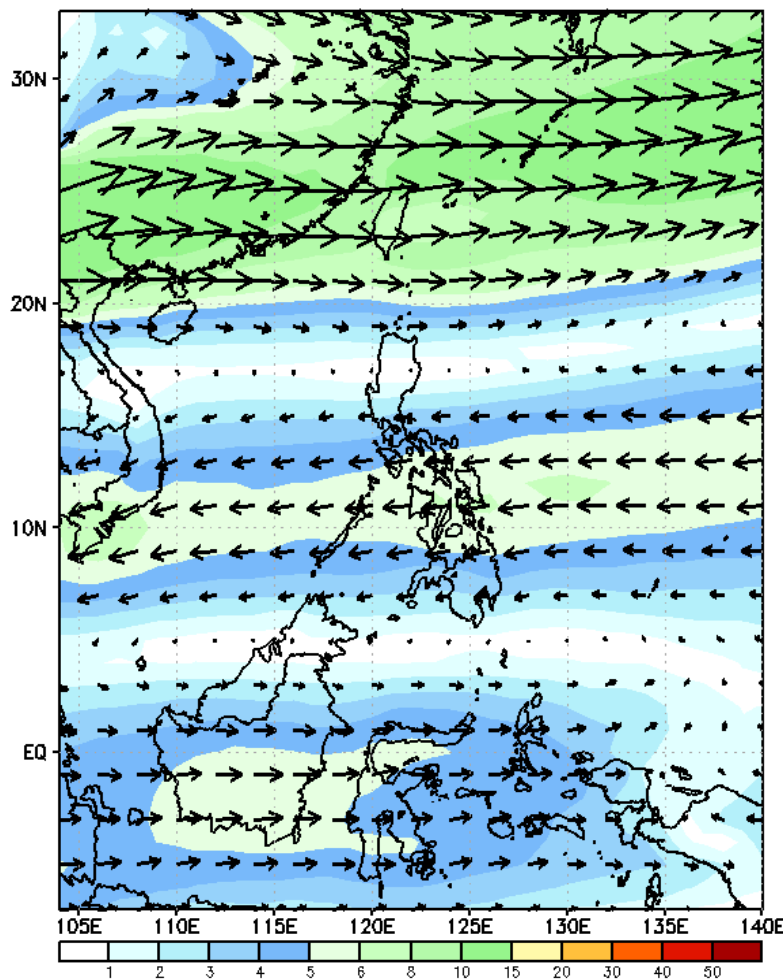
GEFS Week-2 Wind Forecasts:

Week 2: Apr 02-08, 2025

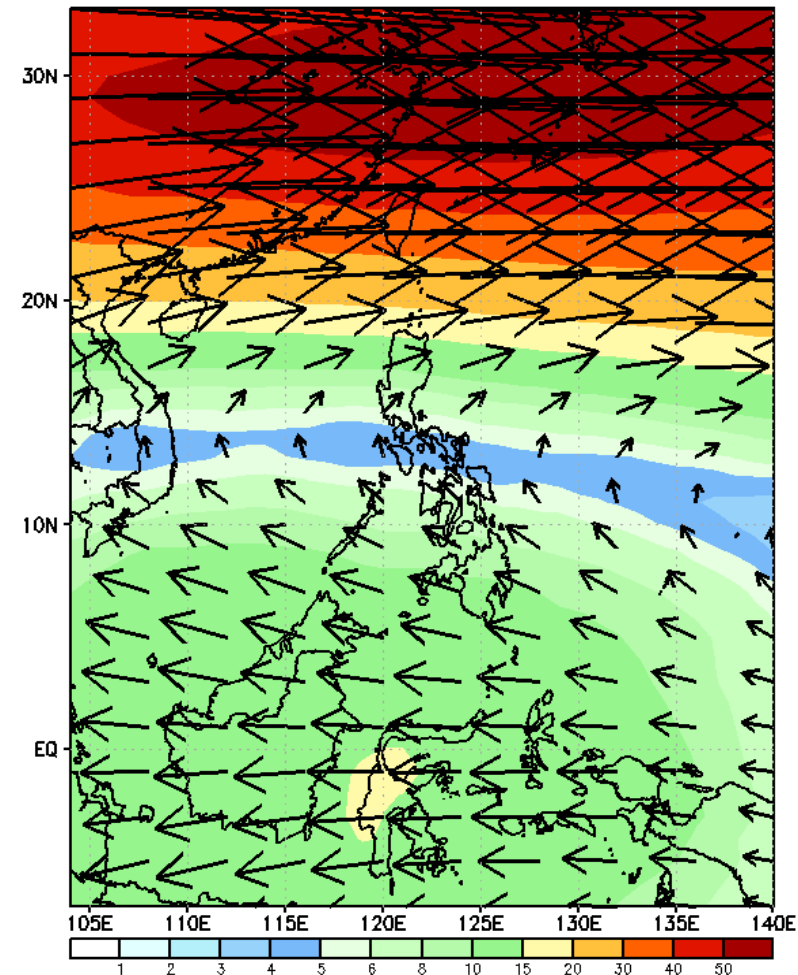
GEFS Week-2 850-hPa Wind Total
Valid: 20250402 - 20250408



GEFS Week-2 700-hPa Wind Total
Valid: 20250402 - 20250408

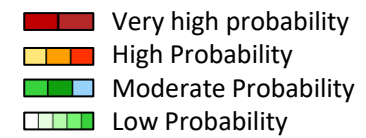


GEFS Week-2 200-hPa Wind Total
Valid: 20250402 - 20250408



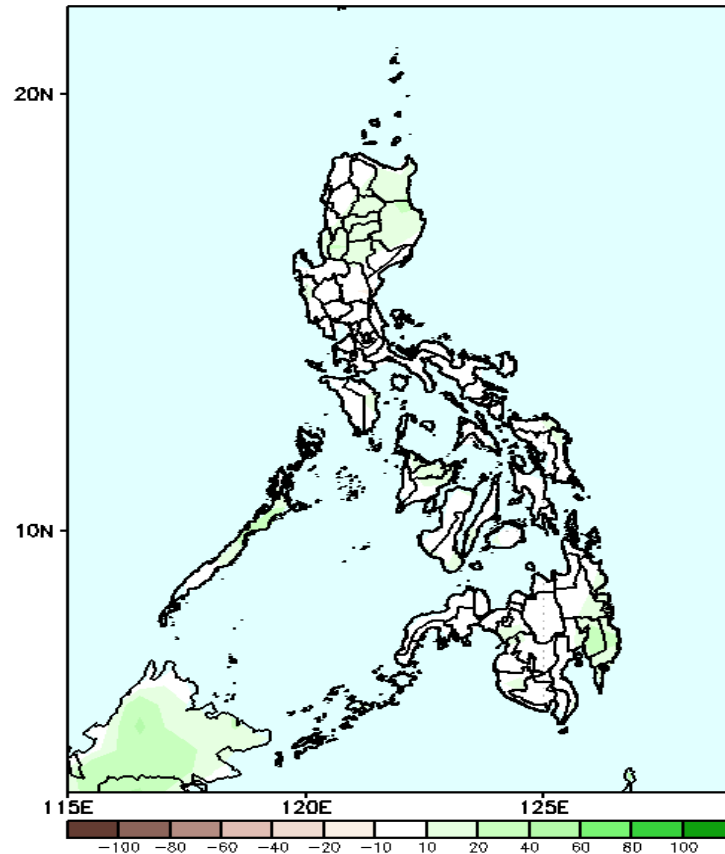
Easterlies affecting most parts of the country during the forecast period

Precipitation Anomaly and Exceedance Probability > 25/50 mm

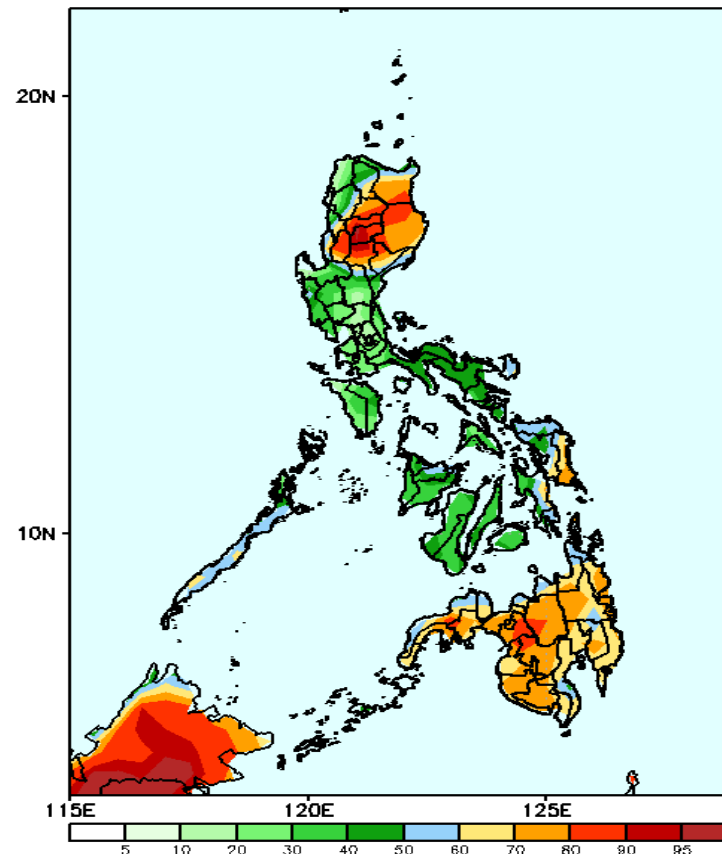


Week 2: Apr 02-08, 2025

GEFS Week-2 Precip Anomaly
Valid: 20250402 - 20250408



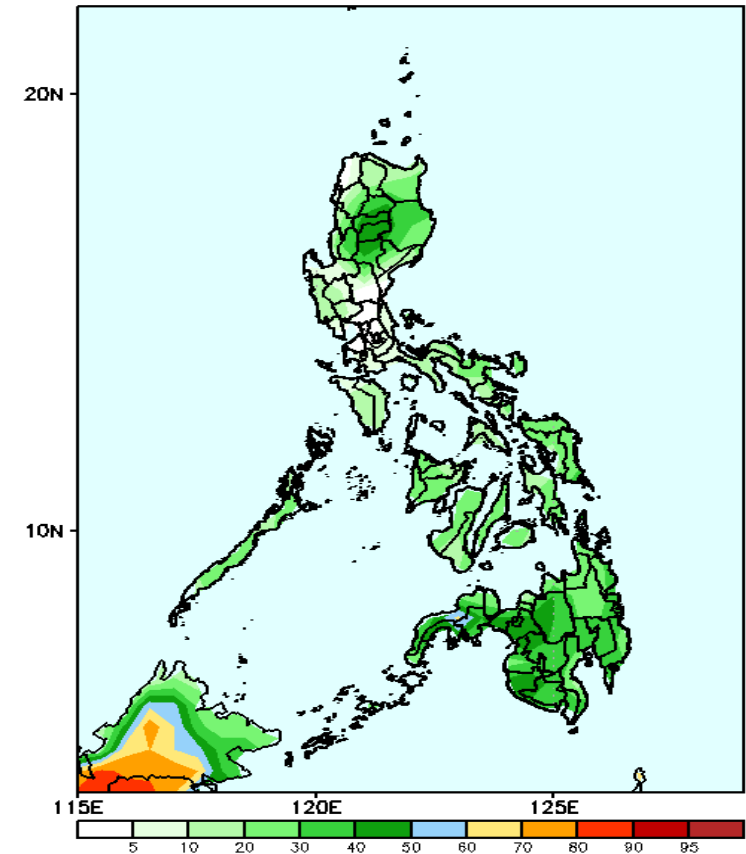
GEFS Week-2 Exceedance Prob. > 25mm
Valid: 20250402 - 20250408



Probability to Exceed 25mm

- High to very high over most parts of CAR;
- Moderate to high over Cagayan, Isabela, Eastern Visayas, and most parts of Mindanao;
- Low to Moderate over the rest of Luzon and Visayas.

GEFS Week-2 Exceedance Prob. > 50mm
Valid: 20250402 - 20250408



Probability to Exceed 50mm

- Low to moderate across the country.

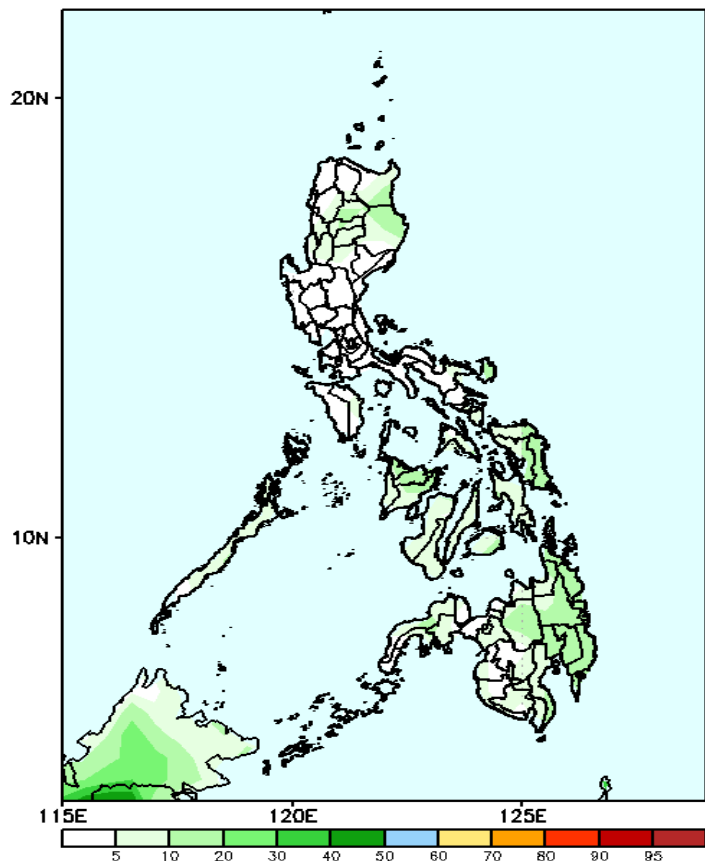
Increase of rainfall of 20-40mm is expected over Northern Luzon, Palawan, and southeastern Mindanao.

Exceedance Probability > 100/150/200 mm

- Very high probability
- High Probability
- Moderate Probability
- Low Probability

Week 2: Apr 02-08, 2025

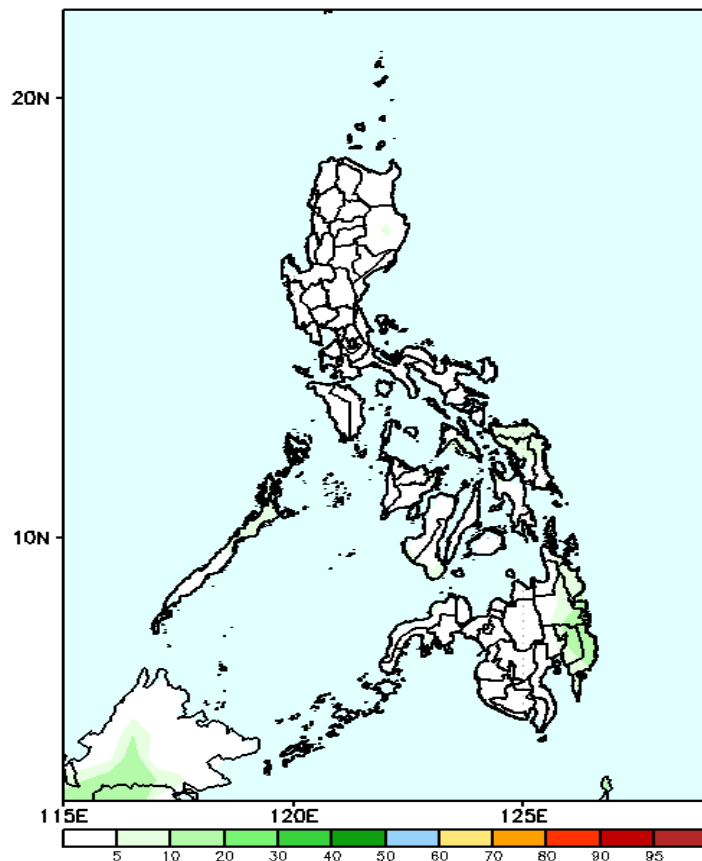
GEFS Week-2 Exceedance Prob. > 100mm
Valid: 20250402 - 20250408



Probability to Exceed 100mm

- Low across the country.

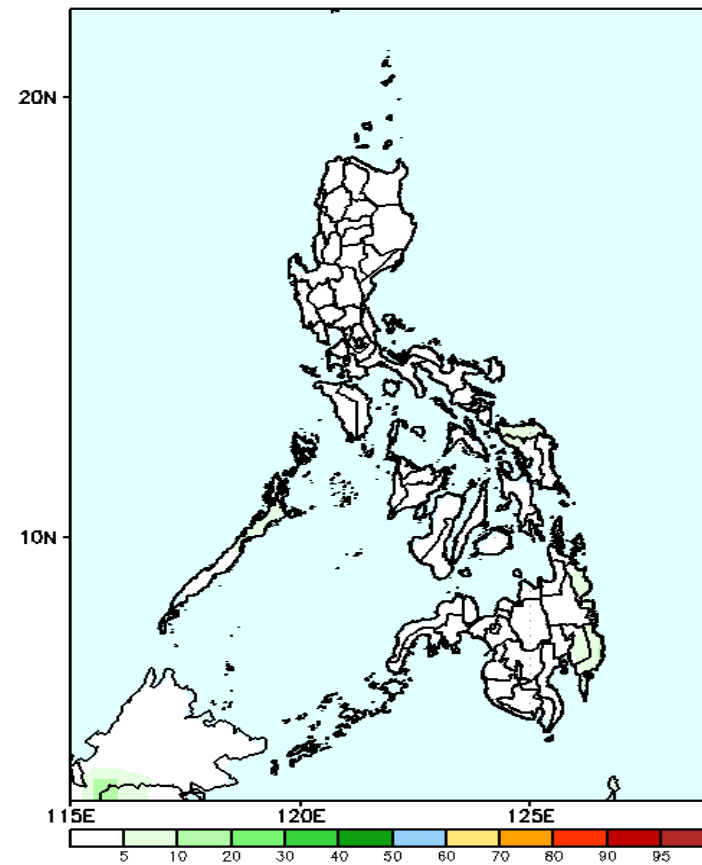
GEFS Week-2 Exceedance Prob. > 150mm
Valid: 20250402 - 20250408



Probability to Exceed 150mm

- Low across the country.

GEFS Week-2 Exceedance Prob. > 200mm
Valid: 20250402 - 20250408

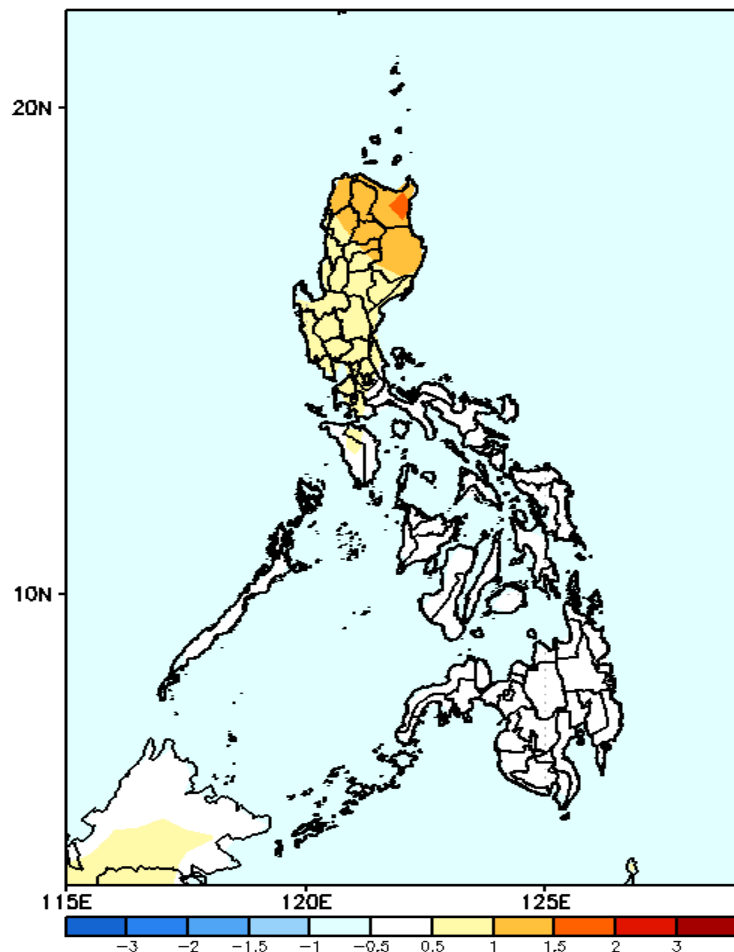


Probability to Exceed 200mm

- Low across the country.

GEFS Week-1 & 2 Forecasts: T2m Anomaly

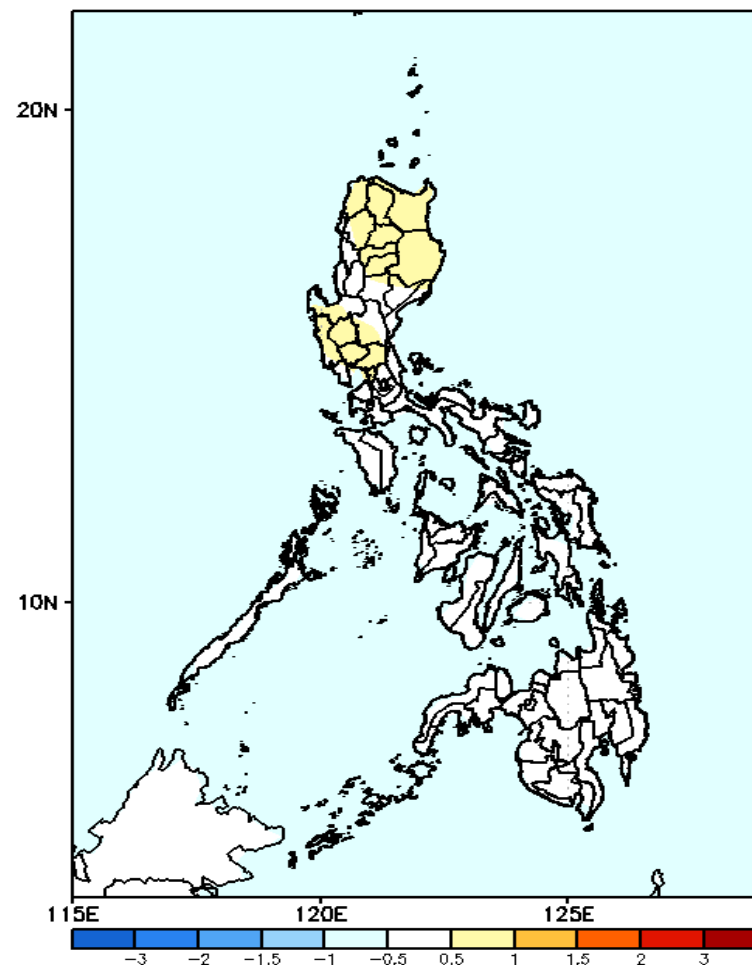
GEFS Week-1 T2m Anomaly
Valid: 20250326 - 20250401



2m Temperature Week 1: Mar 26- Apr 01, 2025

Slightly warmer to warmer than average surface air temperature will likely be experienced in most parts of Luzon while Near average temperature is expected in Visayas and Mindanao.

GEFS Week-2 T2m Anomaly
Valid: 20250402 - 20250408



2m Temperature Week 2: Apr 02-08, 2025

Near to slightly warmer than average surface air temperature will likely be experienced in most parts of the country.